



RADIANS®

HAND PROTECTION



RADIANS.COM • 901-388-7776

HAND PROTECTION

CONTENTS

COATED PALM

4

- 5 FDG COATED
- 6 NITRILE PALM COATED
- 8 PU/LATEX COATED PALM

COLD WEATHER

9

LEATHER

10

- 11 KAMORI SERIES DRIVERS
- 12 LEATHER DRIVERS
- 13 LEATHER PALM
- 15 WELDING GLOVES

CUT PROTECTION

16

- 17 TEKTYE CUT PROTECTION
- 18 A2 CUT PROTECTION
- 19 A2/A3 CUT PROTECTION
- 20 A4 CUT PROTECTION
- 21 A5+ CUT PROTECTION
- 22 GLOVES WITH DYNEEMA® DIAMOND TECHNOLOGY

CUT PROTECTION SLEEVES

24

OTHER STYLES

25

DEWALT

26

- 27 CUT PROTECTION
- 27 COATED
- 28 PERFORMANCE
- 29 GENERAL UTILITY
- 30 LEATHER
- 31 COLD WEATHER

Radians has aggressively expanded our line of hand protection to provide gloves that keep workers' hands protected from common workplace hazards. The National Safety Council estimates that the direct cost of a laceration is \$15,000-\$25,000 including care and missing six days of work, which is the average time off for a hand injury.

You can look to us for performance gloves that protect your workers' hands while not compromising comfort and dexterity. We offer a variety of materials and coatings for various job applications, including nitrile, latex, polyurethane coatings, and cut resistant fibers.



- Uncompromisable Protection
- Quality Performance
- Innovative Solutions

DEWALT

- Trusted Brand
- Worldwide Marketing Support
- Premium Designs

bellingham
by RADIAN'S

- High Quality Industrial Gloves
- Built Tough For The Workplace
- Designed For Performance

MERCHANDISING

GLOVE HANG TAG PROGRAM

FOR FAST, EASY, AND PROFESSIONAL RETAIL DISPLAY OF RADIANS GLOVES AT INDUSTRIAL STOREFRONTS.

- **FAST** Five business day turnaround.
- **EASY** You can place an order for a case of “tagged” gloves just as you would place an order for a case of “untagged” gloves.
- **ECONOMICAL** Competitive pricing.

MINIMUM ORDER REQUIREMENT IS ONE CASE

The minimum order is a case and the gloves in that case can include bulk packs of a dozen in multiple sizes. Keep in mind some of our cases include 72 gloves and some cases include 120 gloves. After a case is ordered, you may order more gloves by the dozen. Many of our competitors will only sell by the case, but Radians is more flexible allowing for dozen bulk pack purchases after the minimum case requirement has been satisfied.



GLOVE VENDING PROGRAM

Because PPE vending machines can increase worker safety and workplace efficiencies, Radians has expanded our hand protection line to include glove packaging for vending machines.

PROGRAM IS EASY TO USE AND EASY TO INSTALL

We offer three vending machine formats that take into consideration the size and features of the glove. After all, not all gloves can be rubber-banded, so we have three options:

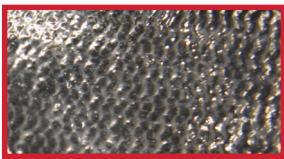
- **GLOVE-BANDED** (Rubber Banded): For customers not wanting plastic.
- **GLOVE-FOLDED** (Tri-Folded to fit in a smaller bag): For cut and non-cut coated gloves.
- **GLOVE-BAGGED** (Bagged Flat): For larger, bulkier gloves.



COATED GLOVES

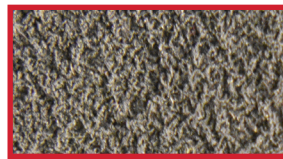
To address specific work-related hand protection issues, Radians uses several different types of palm coatings: smooth nitrile, foam nitrile, sandy foam nitrile, foam latex, sandy foam latex, crinkle latex, PU (polyurethane), and FDG®. Palm coatings allow for better gripping capabilities and tactile sensation without losing dexterity.

COATING DESCRIPTIONS:



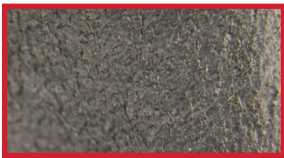
SMOOTH NITRILE

- Excellent Abrasion Resistance
- Synthetic Rubber, Latex Free
- Excellent Puncture Resistance
- Tactile Sensitivity and Flexible Grip



FOAM LATEX

- Micro Texture
- Better Breathability and Comfort
- Excellent Flexibility
- Resistant to Tears and Cuts



FOAM NITRILE

- Lightweight Micro Texture
- Good Grip in Wet or Dry Applications
- Breathable, Flexible and Porous
- Excellent Abrasion Resistance



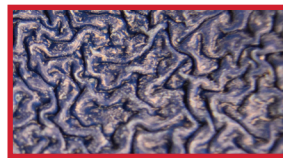
SANDY FOAM LATEX

- Micro-Roughened Texture
- Better Breathability and Comfort
- Excellent Flexibility
- Resistant to Tears and Cuts



SANDY FOAM NITRILE

- Micro-Roughened Texture
- Excellent Grip in Wet or Dry Applications
- Breathable, Flexible and Porous
- Excellent Abrasion Resistance



CRINKLE LATEX

- Rough Texture for Better Grip and Abrasion
- Better Breathability and Comfort
- Excellent Flexibility
- Resistant to Tears and Cuts



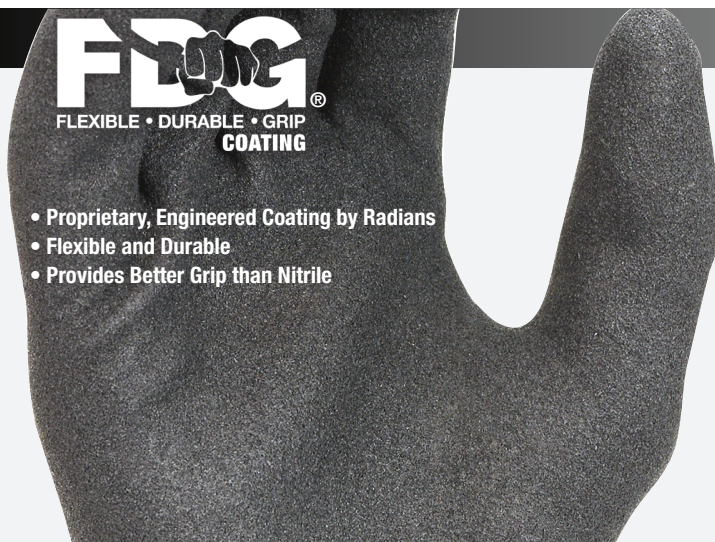
MICROFOAM NITRILE

- Micro Textured
- Excellent Abrasion Resistance
- Good Grip in Wet or Dry Applications
- Breathable, Flexible and Porous



PU (POLYURETHANE)

- Semi-Smooth Texture
- Extremely Flexible
- Superior Dexterity
- Not as Durable as Nitrile or Latex



- Proprietary, Engineered Coating by Radians
- Flexible and Durable
- Provides Better Grip than Nitrile

FDG: WHY IS IT IMPORTANT?

When dealing with Foam, Micro Foam or Sandy Foam Nitrile to get the best grip you must give up some abrasion resistance and to get the best abrasion resistance you have to give up some grip.

With FDG you no longer must give up any of these. You get the **BEST OF BOTH WORLDS.**

GRIP

Good: Micro Foam Nitrile
Better: Foam Nitrile
Best: Sandy Foam Nitrile
Exceptional: **FDG®**

ABRASION

Good: Sandy Foam Nitrile
Better: Foam Nitrile
Best: Micro Foam Nitrile
Exceptional: **FDG®**

When “longer lasting, higher abrasion, and better grip” matter to you, Radians delivers with its proprietary and engineered Flexible Durable Grip Coating.

COATED GLOVES

RWG31 M - XL

- 13 Ga Hi-Vis Green Nylon Shell
- Double-Dipped FDG® Palm Coating



4 1 2 1 X

- 4 - Abrasion
- 1 - Coup Test/Cut
- 2 - Tear
- 1 - Puncture
- X - ISO Cut Test

RWG32 M - XL

- 13 Ga Nylon Shell
- FDG® Palm Coating
- Waterproof Nitrile Coating



4 1 3 1 X

- 4 - Abrasion
- 1 - Coup Test/Cut
- 3 - Tear
- 1 - Puncture
- X - ISO Cut Test

RWG33 M - XL

- 13 Ga Nylon Shell
- FDG® Palm Coating
- Nitrile Dots for Added Abrasion Protection

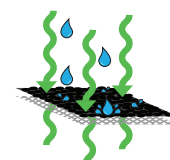


4 1 4 1 X

- 4 - Abrasion
- 1 - Coup Test/Cut
- 4 - Tear
- 1 - Puncture
- X - ISO Cut Test

RWG35 S - XL

- 15 Ga Nylon/Spandex Shell
- Fully Coated Micro Foam Nitrile
- Water-Resistant/Breathable



New AQUA air® Technology Lets Air In While Keeping Water Out, Allowing Hands To Stay Cooler And Perspire Less, Which Increases Comfort.



4 1 2 1 X

- 4 - Abrasion
- 1 - Coup Test/Cut
- 2 - Tear
- 1 - Puncture
- X - ISO Cut Test

Meets ANSI/ISEA

105:2016

6

ABRASION

COATED GLOVES

NITRILE PALM COATING



RWG11 S-XXL

- 15 Ga Gray Nylon Shell
- Micro-Foam Nitrile Palm Dip
- Nitrile Dotted Coating For Added Abrasion

Meets ANSI/ISEA 105:2016



EN388:2016



4 1 2 1 X
4 - Abrasion
1 - Coup Test/Cut
2 - Tear
1 - Puncture
X - ISO Cut Test



RWG12 S-XXL

- 15 Ga Gray Nylon Shell
- 3/4 Micro-Foam Dipped Nitrile
- Nitrile Dotted Coating For Added Abrasion

Meets ANSI/ISEA 105:2016



EN388:2016



4 1 2 1 X
4 - Abrasion
1 - Coup Test/Cut
2 - Tear
1 - Puncture
X - ISO Cut Test



RWG13 S-XXL

- 15 Ga Gray Nylon Shell
- Foam Nitrile Palm Coating
- Water-Resistant

Meets ANSI/ISEA 105:2016



EN388:2016



4 1 3 1 X
4 - Abrasion
1 - Coup Test/Cut
3 - Tear
1 - Puncture
X - ISO Cut Test



RWG13B S-XXL

- 15 Ga Gray Nylon/Spandex Shell
- Micro-foam Nitrile Palm Dip
- Offers Great Dexterity

Meets ANSI/ISEA 105:2016



EN388:2016



4 1 3 1 X
4 - Abrasion
1 - Coup Test/Cut
3 - Tear
1 - Puncture
X - ISO Cut Test



NITRILE PALM COATING



RADIANS®

COATED GLOVES



RWG13C S-XXL

- 15 Ga Gray Polyester Shell
- Foam Nitrile Palm Coating



4 1 2 1 X
4 - Abrasion
1 - Coup Test/Cut
2 - Tear
1 - Puncture
X - ISO Cut Test



RWG15 S-XXL

- 13 Ga Black Polyester Shell
- Gray Smooth Nitrile Coating



3 1 2 1 X
3 - Abrasion
1 - Coup Test/Cut
2 - Tear
1 - Puncture
X - ISO Cut Test



RWG21 S-XXL

- 13 Ga Hi-Vis Yellow Nylon
- Sandy Foam Nitrile Coating
- TPR On Back



4 1 4 1 X
4 - Abrasion
1 - Coup Test/Cut
4 - Tear
1 - Puncture
X - ISO Cut Test

U.S. Pat. No. 9,241,519



RWG23 S-XXL

- 13 Ga Hi-Vis Yellow Polyester Shell
- Sandy Foam Nitrile, EVA Padded Palm
- TPR On Back
- Reinforced Thumb Crotch



4 X 4 1 A
4 - Abrasion
X - Coup Test/Cut
4 - Tear
1 - Puncture
A - ISO Cut Test

U.S. Pat. No. 9,241,519

COATED GLOVES

PU/LATEX PALM COATINGS



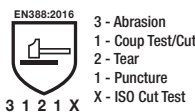
RWG14 S-XXL

- 13 Ga Gray Polyester Shell
- Gray PU Coating



RWG22 XS-XXL

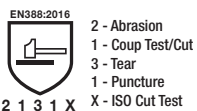
- 13 Ga Hi-Vis Yellow Polyester Shell
- Yellow PU Coating



CAUTION
Product Contains Latex

RWG10 S-XL

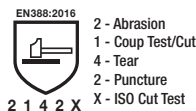
- 15 Ga Hi-Vis Nylon Shell
- Micro-Foam Latex Coating
- Elastic Cuff



CAUTION
Product Contains Latex

RWG16 S-XXL

- 10 Ga Gray Polyester Shell
- Blue Crinkle Latex Coating



CAUTION
Product Contains Latex

RWG18 S-XXL

- 13 Ga Orange Nylon Shell
- Full Orange Waterproof Latex Coating
- Sandy Foam Latex Palm Dip



RADIANS®

COLD WEATHER



CAUTION
Product Contains Latex

RWG17 S-XXL

- 2 Ply Water-Resistant 13 Ga Hi-Vis Orange Nylon Shell
- 7 Ga Acrylic Terry Liner
- 3/4 Dipped Micro Finish Latex Coating



2 2 4 1 X

- 2 - Abrasion
- 2 - Coup Test/Cut
- 4 - Tear
- 1 - Puncture
- X - ISO Cut Test

Meets ANSI/ISEA 105:2016



CUT/980g ABRASION



CAUTION
Product Contains Latex

RWG27 S-XXL

- 7 Ga Hi-Vis Yellow Acrylic Shell
- Liner: 80% Acrylic 20% Polyester
- Blue Crinkle Latex Palm Coating
- EN511-2006 Test Against Cold Contact Achieved Performance Level 1 Thermal Resistance

Meets ANSI/ISEA 105:2016



CUT/1000g



X 1 X



2 X 4 1 X

- 2 - Abrasion
- X - Coup Test/Cut
- 4 - Tear
- 1 - Puncture
- X - ISO Cut Test



CAUTION
Product Contains Latex

RWG28 M-XXL

- 13 Ga Gray Nylon Shell
- 10 Ga Acrylic Liner
- Full Gray Waterproof Latex Coating
- Sandy Foam Latex Palm Dip
- EN511-2006 Test Against Cold Contact Achieved Performance Level 2 Thermal Resistance

Meets ANSI/ISEA 105:2016



CUT/736g



X 2 X



2 2 3 2 X

- 2 - Abrasion
- 2 - Coup Test/Cut
- 3 - Tear
- 2 - Puncture
- X - ISO Cut Test



RWG604 S-XXL

- 2 Ply 13 Ga Pepper HPPE Outer Shell
- 7 Ga Terry Acrylic Liner
- Foam Nitrile Palm Coating
- TPR Overlays on Fingers and Back



4 X 4 4 E P

- 4 - Abrasion
- X - Coup Test/Cut
- 4 - Tear
- 4 - Puncture
- E - ISO Cut Test
- P - Impact Test

U.S. Patent No. 9,241,519

Meets ANSI/ISEA 105:2016



CUT/1785g ABRASION PUNCTURE



CAUTION
Product Contains Latex

RWG605 S-XXL

- 2 Ply 13 Ga Blue and White HPPE Outer Shell
- 7 Ga Acrylic Terry Liner
- Waterproof Blue Smooth Latex Coating
- Foam Latex Palm Coating

Meets ANSI/ISEA 105:2016



CUT/1510g ABRASION PUNCTURE



4 X 4 3 D

- 4 - Abrasion
- X - Coup Test/Cut
- 4 - Tear
- 3 - Puncture
- D - ISO Cut Test



RWG800 S-XXL

- REFLECTIVZ® Waterproof Plated Thermal Lined Palm
- Synthetic Leather Nail Guards
- Reflective Knuckle Strap
- Wraparound Index Finger Seam



LEATHER GLOVES

LEATHER TANNING/GRADES OF LEATHER

Despite mechanization, leather tanning consists of a complex series of treatments that require considerable time and energy. The purpose of the tanning process is to alter the protein structure of the skin to increase its durability, texture, and appearance. All natural hides are sorted at the tannery and are ranked by quality using a very basic system: A, B, C, D or Economy.

- **A GRADE LEATHER:** Has zero blemishes or scar tissue damage
- **B GRADE LEATHER:** May have slight blemishes
- **C GRADE LEATHER:** Visible blemishes and heavy scar tissue damage
- **D OR ECONOMY GRADE LEATHER:** Heavy blemishes & scarring, very course or stiff, & normally gray in color

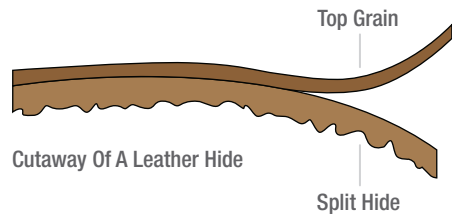
GRAIN VS SPLIT LEATHER

GRAIN LEATHER comes from the top portion of the hide where the hair follicles have been removed. It is smooth to the touch.

SPLIT LEATHER is created by “splitting” the grain leather away from the underside of the hide. Turning one hide into two hides allows for more gloves per square meter to be produced. Split leather is rough to the touch.

Split leather is associated with the thicker hides of larger animals like cows. Smaller animals such as goat or sheep produce top-grain leather only as their hides are not thick enough to split.

If you want longevity, then specify grain leather gloves. If you are trying to outfit or protect temporary workers for intermittent jobs, then split leather gloves offer you cost savings and the necessary hand protection.



TYPES OF LEATHER

COWHIDE:

- Most common & popular type of leather for gloves
- Moderately priced
- Durable glove with good abrasion resistance
- Warmer than pigskin or goatskin
- Stiffens when it gets wet
- More heat resistant

PIGSKIN:

- Offers greatest breathability due to the porous texture of the hide
- Becomes softer with use
- Withstands moisture without becoming stiff
- Dries soft and stays flexible
- Doesn't lose its shape or function when laundered

GOATSKIN:

- Strongest and most durable type of leather
- Excellent abrasion resistance
- Great for tasks that require dexterity
- One of the softest leathers available because of its high lanolin content

WHAT IS A LEATHER DRIVER STYLE?

The driver style is most often defined by the material compositions. If the glove is 100% leather on the palm and the backside, it is likely to be considered a driver style.

THE THREE MAJOR LEATHER GLOVE THUMB DESIGNS

The set-in thumb is sewn in as a separate piece, which improves dexterity. Ideal for applications where there is extreme wear in the thumb webbing area.

Most expensive option due to extensive sewing.



STRAIGHT THUMB

Least effective as it does not allow for natural thumb motion.



WING THUMB

Allows for greater flexibility and efficiency than straight thumbs.



KEYSTONE THUMB

Designed for superior movement and maximum comfort.

LEATHER DRIVERS

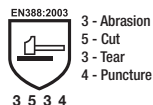
KAMORI SERIES LEATHER DRIVERS

KAMORI
by RADIANS



RWG50 S-XXL

- White Grain Goatskin Driver
- Aramid Lining
- TPR Overlays
- Slip-On Cuff
- Keystone Thumb



U.S. Patent No. 9,241,519



RWG52 S-XXL

- White Grain Goatskin Driver
- Kevlar® Lining
- Slip-On Cuff
- Keystone Thumb



RWG51 M-XXL

- White Grain Goatskin Driver
- TPR Overlays
- Slip-On Cuff
- Keystone Thumb



U.S. Patent No. 9,241,519



RWG56 S-XXL

- White Grain Goatskin Driver
- Kevlar® Lining
- TPR Overlays
- Keystone Thumb
- Slip-On Cuff



RWG58 S-XXL

- White Grain Goatskin Driver
- Kevlar® Lining
- Keystone Thumb
- Slip-On Cuff



RWG152 S-XXL

- White Grain Goatskin Driver
- Kevlar® Lining
- TPR Overlays
- Gel Padded Palm
- Hook & Loop Closure



U.S. Patent No. 9,241,519



LEATHER DRIVERS



RWG4722 S-2XL

- Standard Grain Goatskin Leather Driver
- Keystone Thumb
- Shirred Wrist, Cloth Hem



RWG4221HV S-2XL

- Standard Grain Cowhide Leather Driver
- Keystone Thumb
- Shirred Wrist, Cloth Hem

LEATHER DRIVERS – COMPLETE LIST

	Part#	Hide	Grade	Thumb	Cuff	Stitching	Liner	Size
GOATSKIN	RWG50	Grain Goatskin	Standard	Keystone	Slip-On	Poly/Cotton	Aramid	S-XXL
	RWG51	Grain Goatskin	Standard	Keystone	Slip-On	Poly/Cotton	-	M-XXL
	RWG52	Grain Goatskin	Standard	Keystone	Slip-On	Poly/Cotton	Aramid	S-XXL
	RWG56	Grain Goatskin	Standard	Keystone	Slip-On	Poly/Cotton	Kevlar	S-XXL
	RWG58	Grain Goatskin	Standard	Keystone	Slip-On	Poly/Cotton	Kevlar	S-XXL
	RWG152	Grain Goatskin	Standard	Wing	Slip-On	Poly/Cotton	Kevlar	S-XXL
	RWG4710	Grain Goatskin	Economy	Keystone	Slip-On	Poly/Cotton	-	S-XXL
	RWG4720	Grain Goatskin	Standard	Straight	Slip-On	Poly/Cotton	-	S-XXL
	RWG4722	Grain Goatskin	Standard	Keystone	Slip-On	Poly/Cotton	-	S-XXL
PIGSKIN	RWG4740	Grain Goatskin	Premium	Straight	Slip-On	Poly/Cotton	-	S-XXL
	RWG4742	Grain Goatskin	Premium	Keystone	Slip-On	Poly/Cotton	-	S-XXL
COWHIDE	RWG4821	Grain Pigskin	Standard	Keystone	Slip-On	Poly/Cotton	-	S-XL
	RWG4010	Split Cowhide	Economy	Straight	Slip-On	Poly/Cotton	-	S-XXL
	RWG4020	Split Cowhide	Standard	Straight	Slip-On	Poly/Cotton	-	S-XL
	RWG4025	Split Cowhide	Standard	Straight	Slip-On	Poly/Cotton	Red Fleece	S-XXL
	RWG4120	Grain Cowhide	Economy	Straight	Slip-On	Poly/Cotton	-	S-XXL
	RWG4121	Grain Cowhide	Economy	Wing	Slip-On	Poly/Cotton	-	S-XXL
	RWG4122	Grain Cowhide	Economy	Keystone	Slip-On	Poly/Cotton	-	S-XXL
	RWG4220	Grain Cowhide	Standard	Keystone	Slip-On	Poly/Cotton	-	S-XXXL
	RWG4220H	Grain Cowhide w/Hi-Vis Fingertips	Standard	Keystone	Slip-On	Poly/Cotton	-	S-XXL
	RWG4221	Grain Cowhide	Standard	Keystone	Pull Strap	Poly/Cotton	-	S-XXL
	RWG4221HV	Grain Cowhide w/Hi-Vis Fingertips & Logo	Standard	Keystone	Slip-On	Poly/Cotton	-	S-XXL
	RWG4225	Grain Cowhide	Standard	Keystone	Slip-On	Poly/Cotton	Red Fleece	S-XXL
	RWG4420	Grain Cowhide	Premium	Keystone	Slip-On	Poly/Cotton	-	S-XXL
	RWG4425	Grain Cowhide	Premium	Keystone	Slip-On	Poly/Cotton	40g Thinsulate®	S-XXL
	RWG4222	Grain Cowhide / Split Cowhide Back	Standard	Keystone	Slip-On	Poly/Cotton	-	S-XXL
	RWG4421	Grain Cowhide / Split Cowhide Back	Premium	Keystone	Slip-On	Kevlar®	-	S-XXL



WHAT IS A LEATHER PALM STYLE?



Both the shape and the materials used in the glove help to identify it as a leather palm. If the glove is 100% leather on the palm but the top of hand is fabric, it is likely a "leather palm." Safety cuffs are also common features on leather palm gloves.

NOTE: There have been advances in glove design recently that combine features and benefits from drivers, leather palms, and performance gloves. This category is recognized as a hybrid style. To determine a leather palm from a hybrid, look for a "rubberized or starched safety cuff." If the glove has a rubberized or starched safety cuff, then it is a leather palm.

LEATHER PALM

FORM FACTOR

90% of leather palms are made from split cowhide. Wearing split cowhide leather palm gloves is popular at large jobsites that require employees to wear hand protection but have limited budgets. It is a general purpose, low cost glove used in applications that don't require good dexterity. Pigskin has a greater resistance to water and abrasion and is used mostly in cold weather climates.

CUFF STYLES



STARCHED

Two layers of fabric laminated & stiffened with starch



DUCK CUFF

Launderable single ply cotton material



RUBBERIZED

Bonding of cuff layers with rubber cement. Standard safety cuff 2.5"



GAUNTLET

4 - 5" longer cuff to provide extra protection up the wrist & arm



KNIT

Elastic around wrist to keep dust & debris from entering glove

FEATURED LEATHER PALMS



RWG3700 M - XL

- Premium Grain Goatskin Leather Palm
- Gunn Cut w/Wing Thumb
- Leather Knuckle Strap
- Rubberized Safety Cuff



RWG3103 S - XXL

- Economy Shoulder Gray Split Cowhide Leather Palm
- Gunn Cut w/Wing Thumb
- Leather Knuckle Strap
- Rubberized Safety Cuff



RWG3825 L - XXL

- Standard Grain Pigskin Leather Palm
- Gunn Cut w/Wing Thumb
- 150 Gram Micro Fleece Lined
- Leather Knuckle Strap
- 4" Knit Wrist



LEATHER PALM



RWG3200JP M – 2XL

- Regular Shoulder Gray Split Cowhide Joint Leather Palm
- Gunn Cut w/Wing Thumb
- Leather Knuckle Strap
- Rubberized Safety Cuff



RWG3300 M – XL

- Select Shoulder Gray Split Cowhide Palm
- Gunn Cut w/Wing Thumb
- Leather Knuckle Strap
- Rubberized Safety Cuff



RWG3400WDP M – XL

- Side Split Gray Cowhide Double Palm
- Gunn Cut w/Wing Thumb
- Canvas Back
- Leather Knuckle Strap
- Aramid Thread
- Rubberized Safety Cuff

LEATHER PALM GLOVES – COMPLETE LIST

	Part	Hide	Grade	Cut	Palm	Back	Color	Cuff	Stitching	Liner	Size
PIGSKIN	RWG3700	Grain Goatskin	Premium	Gunn	Single	Canvas	Red	Rubberized Safety	Poly/Cotton	-	M-XL
	RWG3825	Grain Pigskin	Standard	Gunn	Single	Canvas	Blue/Black	Knit Wrist	Poly/Cotton	150g Micro Fleece	L-XL
	RWG3840	Grain Pigskin	Premium	Gunn	Single	Canvas	Blue/Red	Rubberized Safety	Poly/Cotton	-	L-XL
	RWG3010	Split Cowhide	Economy	Clute	Single	Canvas	Blue/Red	Knit Wrist	Poly/Cotton	-	L
	RWG3012	Split Cowhide	Economy	Clute	Single	Canvas	Blue/Red	Knit Wrist	Poly/Cotton	-	Ladies L
	RWG3103	Split Cowhide	Economy	Gunn	Single	Canvas	Red/Gray	Rubberized Safety	Poly/Cotton	-	S-XXL
	RWG3103G	Split Cowhide	Economy	Gunn	Single	Canvas	Red/Gray	Rubberized Gauntlet	Poly/Cotton	-	L
	RWG3105	Split Cowhide	Economy	Gunn	Single	Canvas	Red/Gray	Rubberized Safety	Poly/Cotton	Red Fleece	L
	RWG3110	Split Cowhide	Economy	Gunn	Patch	Denim	Navy	Denim Safety	Poly/Cotton	-	L
	RWG3111	Split Cowhide	Economy	Gunn	Single	Canvas	Blue/Red	Starched Safety	Poly/Cotton	-	L
COWHIDE	RWG3200	Split Cowhide	Shoulder	Gunn	Single	Canvas	Blue/Red	Rubberized Safety	Poly/Cotton	-	S-XXL
	RWG3200G	Split Cowhide	Shoulder	Gunn	Single	Canvas	Blue/Red	Rubberized Gauntlet	Poly/Cotton	-	L
	RWG3200DP	Split Cowhide	Shoulder	Gunn	Double	Canvas	Blue/Red	Rubberized Safety	Poly/Cotton	-	L-XL
	RWG3200HV	Split Cowhide	Shoulder	Gunn	Single	Nylon	Hi-Vis Orange	Rubberized Safety	Poly/Cotton	-	L-XL
	RWG3200JP	Split Cowhide	Shoulder	Gunn	Joint	Canvas	Blue/Red	Rubberized Safety	Poly/Cotton	-	M-XXL
	RWG3200W	Split Cowhide	Shoulder	Gunn	Single	Canvas	White	Washable Duck	Poly/Cotton	-	M-XXL
	RWG3205	Split Cowhide	Shoulder	Gunn	Single	Canvas	Blue/Red	Rubberized Safety	Poly/Cotton	40g Thinsulate®	M-XXL
	RWG3206	Split Cowhide	Shoulder	Gunn	Single	Leather	Grey	Rubberized Safety	Poly/Cotton	-	L
	RWG3210	Grain Cowhide	Shoulder	Gunn	Single	Canvas	Blue/Black	Rubberized Safety	Poly/Cotton	-	S-XXL
	RWG3300	Split Cowhide	Select Shoulder	Gunn	Single	Canvas	Green/Pink	Rubberized Safety	Poly/Cotton	-	M-XL
	RWG3300G	Split Cowhide	Select Shoulder	Gunn	Single	Canvas	Green/Pink	Rubberized Gauntlet	Poly/Cotton	-	M-XL
	RWG3400W	Split Cowhide	Side Split	Gunn	Single	Canvas	White	Rubberized Safety	Aramid	-	M-XXL
	RWG3400WG	Split Cowhide	Side Split	Gunn	Single	Canvas	White	Rubberized Gauntlet	Aramid	-	M-XL
	RWG3400WDP	Split Cowhide	Side Split	Gunn	Double	Canvas	White	Rubberized Safety	Aramid	-	M-XL
	RWG3400WDPG	Split Cowhide	Side Split	Gunn	Double	Canvas	White	Rubberized Gauntlet	Aramid	-	M-XL

WELDING GLOVES



RWG5100 XL

- Gray Split Economy Shoulder Cow Leather
- Fleece Cotton Drill Lining
- Wing Thumb
- 14" One-Piece Back

Also Available Left Hand Only (RWG5100LH)



RWG5410 XL

- Premium Side Split Blue Cowhide Leather
- Full Sock Lining With Foam
- Reinforced Palm
- Wing Thumb
- 14" Fully Weltd Seams
- Aramid Sewn



RWG5310 XL

- Select Split Brown Cowhide Leather
- Full Sock Lining With Foam
- Reinforced Palm
- Wing Thumb
- 14" Fully Weltd Seams
- Aramid Sewn

RWG5210 XL

- Blue Regular Shoulder, Split Leather
- Full Sock Jersey Lined
- Wing Thumb, Reinforced Palm
- 14" Fully Weltd Seams
- Aramid Sewn

MIG/TIG WELDING GLOVES



RWG6210 M-XXL

- Mig-Tig Regular Grain Cowhide
- Seamless Forefinger
- Wing Thumb
- 4" Blue Regular Split Shoulder Cuff
- Aramid Sewn



RWG6310 M-XXL

- Mig-Tig Select Grain Cowhide
- Seamless Forefinger
- Wing Thumb
- 4" Brown Regular Split Shoulder Cuff
- Aramid Sewn



RWG6710 M-XXL

- Mig-Tig Select Grain Goatskin
- Seamless Forefinger
- Wing Thumb
- 4" Brown Regular Split Shoulder Cuff
- Aramid Sewn

CUT PROTECTION GLOVES

ANSI CUT LEVEL RATINGS

There are many kinds of cut hazards, and each one requires a different level of protection. Use the table below to help determine the cut level rating necessary for your work environment.



LIGHT CUT HAZARDS:

material handling, assembly, maintenance, packaging, warehouse, general purpose, construction

200 - 499 grams



LIGHT/MEDIUM CUT HAZARDS:

material handling, assembly, maintenance, packaging, warehouse, general purpose, construction, metal handling, appliance manufacturing

500 - 999 grams



LIGHT/MEDIUM CUT HAZARDS:

material handling, assembly, maintenance, packaging, warehouse, general purpose, construction, metal handling, appliance manufacturing

1000 - 1499 grams



MEDIUM CUT HAZARDS:

bottle and light glass handling, canning, dry walling, electrical, carpet installation, HVAC, paper production, automotive assembly, metal handling, metal stamping, packaging, warehouse, appliance manufacturing

1500 - 2199 grams



MEDIUM CUT HAZARDS:

bottle and light glass handling, canning, dry walling, electrical, carpet installation, HVAC, paper production, automotive assembly, metal handling, metal stamping, packaging, warehouse, appliance manufacturing

2200 - 2999 grams



MEDIUM/HEAVY CUT HAZARDS:

bottle and light glass handling, canning, dry walling, electrical, carpet installation, HVAC, paper production, automotive assembly, metal handling, metal stamping, packaging, warehouse, appliance manufacturing

3000 - 3999 grams



MEDIUM/HEAVY CUT HAZARDS:

bottle and light glass handling, canning, dry walling, electrical, carpet installation, HVAC, paper production, automotive assembly, metal handling, metal stamping, packaging, warehouse, appliance manufacturing, meat processing

4000 - 4999 grams



HEAVY CUT HAZARDS:

bottle and light glass handling, canning, dry walling, electrical, carpet installation, HVAC, paper production, automotive assembly, metal handling, metal stamping, packaging, warehouse, appliance manufacturing, meat processing

5000 - 5999 grams



HEAVY CUT HAZARDS:

bottle and light glass handling, canning, dry walling, electrical, carpet installation, HVAC, paper production, automotive assembly, metal handling, metal stamping, packaging, warehouse, appliance manufacturing, meat processing

6000+ grams



A2/A3 CUT PROTECTION

RWG530 S-XXL

- 13 Ga Salt-N-Pepper HPPE Shell
- Grey Polyurethane Palm Coating



3 X 4 2 A
3 - Abrasion
X - Coup Test/Cut
4 - Tear
2 - Puncture
A - ISO Cut Test

RWG531 S-XXL

- Materials Compliant w/ FDA 21 CFR 177.152
- 13 Ga Hi-Vis Yellow HPPE Shell
- Water Based PU Coating



Individually Polybagged

Made with FDA accepted material for use in food processing



4 3 4 4
4 - Abrasion
3 - Cut
4 - Tear
4 - Puncture



RWG532 S-XXL

- 13 Ga Black HPPE Shell
- Foam NBR Palm Coating
- Touchscreen Capable



Individually Polybagged



4 - Abrasion
X - Coup Test/Cut
4 - Tear
3 - Puncture
4 3 4 3



RWG533 XS-XXL

- 18 Ga Green HPPE Shell
- Foam Nitrile Palm Coating



4 - Abrasion
3 - Cut
4 - Tear
1 - Puncture
4 3 4 1



RWG538 XS-XXL

- 18 Ga Green HPPE Shell
- Foam Nitrile Palm Coating With Dots
- Reinforced Thumb Crotch



4 - Abrasion
X - Coup Test/Cut
4 - Tear
1 - Puncture
B - ISO Cut Test
4 X 4 1 B



RWG550 XS-XXL

- 13 Ga Trosar by DSM™ Shell
- Gray Polyurethane Palm Coating

Individually Polybagged



4 - Abrasion
X - Coup Test/Cut
4 - Tear
2 - Puncture
B - ISO Cut Test
4 X 4 2 B



RWG561 XS-XXL

- 18 Ga Gray HPPE Shell
- Polyurethane Palm Coating



3 - Abrasion
X - Coup Test/Cut
4 - Tear
1 - Puncture
B - ISO Cut Test
3 X 4 1 B



RWG562 S-XXL

- 13 Ga Salt N Pepper HPPE
- Gray Polyurethane Palm Coating



4 - Abrasion
X - Coup Test/Cut
4 - Tear
3 - Puncture
C - ISO Cut Test
4 X 4 3 C



RWG555 XS-XXL

- 13 Ga Salt-N-Pepper HPPE Shell w/Fiberglass
- Foam Nitrile Palm Coating

Meets ANSI/ISEA 105:2016			EN388:2016		
A4	4	5		4 - Abrasion	X - Coup Test/Cut
CUT/1550g	ABRASION	PUNCTURE		4 - Tear	4 - Puncture
				D - ISO Cut Test	



RWG557 S-XXL

- 13 Ga Orange High Tenacity Nylon w/Fiberglass
- Polyurethane Palm Coating

Meets ANSI/ISEA 105:2016			EN388:2003		
A4	1	4		4 - Abrasion	5 - Cut
CUT/1522g	ABRASION	PUNCTURE		4 - Tear	3 - Puncture



RWG560 XS-XXL

- 13 Ga Gray HPPE w/Fiberglass
- Polyurethane Palm Coating

Meets ANSI/ISEA 105:2016			EN388:2016		
A4	6	5		4 - Abrasion	X - Coup Test/Cut
CUT/1826g	ABRASION	PUNCTURE		4 - Tear	2 - Puncture
				D - ISO Cut Test	



RWG564 S-XXL

- 13 Ga Hi-Vis Green HPPE w/Fiberglass
- Foam Nitrile Palm Coating

Meets ANSI/ISEA 105:2016			EN388:2016		
A4	6	4		4 - Abrasion	X - Coup Test/Cut
CUT/2187g	ABRASION	PUNCTURE		4 - Tear	2 - Puncture
				D - ISO Cut Test	



RWG566 XS-XXL

- 18 Ga Gray HPPE w/Stainless Steel
- Polyurethane Palm Coating
- Touchscreen Capable

Meets ANSI/ISEA 105:2016			EN388:2016		
A5	3	2		4 - Abrasion	X - Coup Test/Cut
CUT/2625g	ABRASION	PUNCTURE		3 - Tear	1 - Puncture
				E - ISO Cut Test	



RWG603 S-2XL

- 13 Ga Pepper HPPE Shell w/Fiberglass
- Red Sandy Foam Nitrile Palm Coating
- TPR Overlays

Meets ANSI/ISEA 105:2016			ANSI / ISEA 138		
A5	5	5		4 - Abrasion	X - Coup Test/Cut
CUT/2837g	ABRASION	PUNCTURE		4 - Tear	4 - Puncture
				E - ISO Cut Test	P - Impact Test

Individually Polybagged
U.S. Patent No. 9,241,519



RWG603R S-2XL

- 13 Ga Pepper HPPE Shell w/Fiberglass
- Red Sandy Foam Nitrile Palm Coating
- Reinforced Thumb Crotch
- TPR Overlays

Meets ANSI/ISEA 105:2016			ANSI / ISEA 138		
A5	5	5		4 - Abrasion	X - Coup Test/Cut
CUT/2837g	ABRASION	PUNCTURE		4 - Tear	4 - Puncture
				E - ISO Cut Test	P - Impact Test

Individually Polybagged
U.S. Patent No. 9,241,519

A5+ CUT PROTECTION

RADIANS®



RWG535 S-XXL

- 13 Ga HPPE/Stainless Steel Shell
- Foam NBR Palm Coating
- Reinforced Thumb Crotch
- Touchscreen Capable

Meets ANSI/ISEA 105:2016



EN388:2016



RWG609 S-XXL

- 13 Ga HPPE/Stainless Steel
- Sandy Foam Nitrile, EVA Padded Palm
- Reinforced Thumb Crotch
- TPR Overlays

Meets ANSI/ISEA 105:2016



U.S. Patent No. 9,241,519

EN388:2016



RWG558 XS-XXL

- 13 Ga Hi-Vis Green HPPE w/Fiberglass & Stainless Steel
- Polyurethane Palm Coating

Meets ANSI/ISEA 105:2016



EN388:2016



RWG559 XS-XXL

- 13 Ga Hi-Vis Orange HPPE w/Fiberglass & Stainless Steel
- Sandy Foam Nitrile Palm Coating

Meets ANSI/ISEA 105:2016



EN388:2016



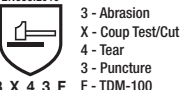
RWG588 XS-XXL

- 18 Ga Blue HPPE Outer Shell
- Gray PU Palm Coating
- Touchscreen Capable

Meets ANSI/ISEA 105:2016



EN388:2016



RWG589 XS-XXL

- 18 Ga Black HPPE Outer Shell
- Sandy Foam Nitrile Palm Coating
- Reinforced Thumb Crotch
- Touchscreen Capable

Meets ANSI/ISEA 105:2016



EN388:2016



CUT PROTECTION

TEKTYE™ by RADIANS®

This engineered yarn can get to an ANSI cut level of A4
WITHOUT THE USE OF FIBERGLASS OR STAINLESS STEEL.

Provides more comfort and dexterity vs HPPE with
Fiberglass or Stainless Steel.

Cost effective option for higher cut levels.

RADIANS®

WHY IS THIS IMPORTANT?

When Glass Fiber or Stainless Steel is used in the shell over time those fibers will break. This not only causes possible irritation to the skin in the areas of the break but also in that exact spot of the breakage the glove is no longer an A4 but rather closer to an A2.

RWG713 S-XXL

- 13 Ga TekTye™ A4
(Fiberglass & Stainless Steel Free)
- FDG® Palm Coating
- Reinforced Thumb Crotch



EN388:2016
4 - Abrasion
X - Coup Test/Cut
4 - Tear
3 - Puncture
4 X 4 3 D D - ISO Cut Test

Meets ANSI/ISEA 105:2016

A4 **5** **4**
CUT/1566g ABRASION PUNCTURE

RWG718 S-XXL

- 18 Ga TekTye™ A4
(Fiberglass & Stainless Steel Free)
- FDG® Palm Coating
- Touchscreen Capable



EN388:2016
4 - Abrasion
X - Coup Test/Cut
4 - Tear
2 - Puncture
4 X 4 2 D D - ISO Cut Test

Meets ANSI/ISEA 105:2016

A4 **6** **4**
CUT/1556g ABRASION PUNCTURE



RWG701 S-XXL

- 13 Ga TekTye™ A4
(Fiberglass & Stainless Steel Free)
- Polyurethane Palm Coating
- Touchscreen Capable



Meets ANSI/ISEA 105:2016

A4 **6** **4**
CUT/1995g ABRASION PUNCTURE

EN388:2016
4 - Abrasion
X - Coup Test/Cut
4 - Tear
3 - Puncture
4 X 4 3 D D - ISO Cut Test



RWG703 XS-XXL

- 13 Ga TekTye™ A4
(Fiberglass & Stainless Steel Free)
- Sandy Nitrile Palm Coating
- Reinforced Thumb Crotch

Meets ANSI/ISEA 105:2016

A4 **6** **4**
CUT/1964g ABRASION PUNCTURE

EN388:2016
4 - Abrasion
X - Coup Test/Cut
4 - Tear
2 - Puncture
4 X 4 2 C - ISO Cut Test



RWG705 S-XXL

- 13 Ga TekTye™ A4
(Fiberglass & Stainless Steel Free)
- Foam Nitrile Palm Coating
- Reinforced Thumb Crotch

Meets ANSI/ISEA 105:2016

A4 **6** **4**
CUT/1600g ABRASION PUNCTURE

EN388:2016
4 - Abrasion
X - Coup Test/Cut
4 - Tear
3 - Puncture
4 X 4 3 D D - ISO Cut Test

A4/A6 CUT PROTECTION



RWG708 XS-XXL

- 18-Gauge TEKTYE™ Yarn (Fiberglass & Stainless Steel Free)
- Foam Nitrile Palm Coating
- Reinforced Thumb Crotch
- Touchscreen Capable



Meets ANSI/ISEA 105:2016

A4	4	3
CUT/1776g	ABRASION	PUNCTURE

EN388:2016

4 - Abrasion	X - Coup Test/Cut	4 - Tear	2 - Puncture	F - ISO Cut Test
3	X	4	2	D



RWG723 XS-XXL

- 13-Gauge TEKTYE™ Yarn (Fiberglass & Stainless Steel Free)
- Sandy Foam Nitrile Palm Coating
- TPR Overlays



Meets ANSI/ISEA 105:2016

A6	4	3
CUT/3445g	ABRASION	PUNCTURE

EN388:2016

4 - Abrasion	X - Coup Test/Cut	4 - Tear	2 - Puncture	F - ISO Cut Test
4	X	4	2	F



RWG738 XS-XXL

- 18-Gauge TEKTYE™ Yarn (Fiberglass & Stainless Steel Free)
- Foam Nitrile Palm Coating
- Nitrile Dotted
- Reinforced Thumb Crotch

Meets ANSI/ISEA 105:2016

A4	6	3
CUT/2038g	ABRASION	PUNCTURE

EN388:2016

4 - Abrasion	X - Coup Test/Cut	4 - Tear	2 - Puncture	D - ISO Cut Test
4	X	4	2	D

RWG755 XS-XXL

- 13-Gauge TEKTYE™ Yarn (Fiberglass & Stainless Steel Free)
- Foam Nitrile Palm Coating
- Reinforced Thumb Crotch



Meets ANSI/ISEA 105:2016

A5	4	3
CUT/2848g	ABRASION	PUNCTURE

EN388:2016

4 - Abrasion	X - Coup Test/Cut	4 - Tear	2 - Puncture	E - ISO Cut Test
4	X	4	2	E

RWG756 XS-XXL

- Fully coated 18-Gauge TEKTYE™ Yarn (Fiberglass & Stainless Steel Free)
- Sandy Foam Nitrile Palm Coating
- Reinforced Thumb Crotch
- Waterproof Nitrile Coating



Meets ANSI/ISEA 105:2016

A4	6	3
CUT/2005g	ABRASION	PUNCTURE

EN388:2016

4 - Abrasion	X - Coup Test/Cut	4 - Tear	1 - Puncture	D - ISO Cut Test
4	X	4	1	D

CUT PROTECTION GLOVES

WORLD'S MOST ADVANCED CUT RESISTANT FIBER

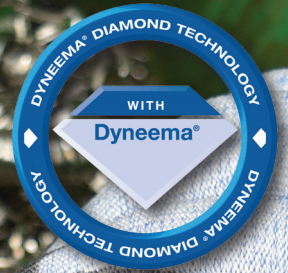
Dyneema® Diamond Technology offers maximum protection over traditional materials like aramid, leather, nylon and polyethylene with glass fiber.

It can achieve levels B, C and D based on the latest EN388 2016 standard and levels A2, A3 and A4 on the new ANSI/ISEA 105-2016 standard without the use of glass or steel fiber reinforcement, which may break during use causing skin irritation.

GREATER COMFORT & DEXTERITY

Dyneema® Diamond Technology fibers are thinner than generic HMPE fibers and 40% less dense than aramid fibers, making them more comfortable, thinner and cooler to the touch, while still providing advanced cut protection.

It also promotes skin-like dexterity, allowing users to perform delicate and precise tasks efficiently.



RWGD100 XS-XXL

- 15 Ga Speckled Hi-Viz Yellow Shell
- Polyurethane Palm Coating
- Touchscreen Capable



Individually Polybagged

Meets ANSI/ISEA 105:2016



3 X 4 3 D
3 - Abrasion
X - Coup Test/Cut
4 - Tear
3 - Puncture
D - ISO Cut Test



RWGD101 XS-XXL

- 13 Ga Light Gray Shell
- Gray Polyurethane Palm Coating

Individually Polybagged

Meets ANSI/ISEA 105:2016



4 X 4 2 C
4 - Abrasion
X - Coup Test/Cut
4 - Tear
2 - Puncture
C - ISO Cut Test

Dyneema® is a registered trademark of DSM. Use of this trademark is prohibited unless strictly authorized.

DYNEEMA® DIAMOND TECHNOLOGY

RWGD104 S-XXL

- 13 Ga Blue Speckled Shell
- Polyurethane Palm Coating
- Touchscreen Capable

Individually Polybagged

Meets ANSI/ISEA 105:2016



EN388:2016



4 X 4 3 D
 4 - Abrasion
 X - Coup Test/Cut
 4 - Tear
 3 - Puncture
 D - ISO Cut Test



RWGD110 S-XXL

- 13 Ga Salt-N-Pepper Shell
- Foam Nitrile Palm Coating
- TPR Overlays

Individually Polybagged

Meets ANSI/ISEA 105:2016



4 5 4 4
 4 - Abrasion
 5 - Cut
 4 - Tear
 4 - Puncture



U.S. Patent No. 9,241,519

Dyneema® is a registered trademark of DSM. Use of this trademark is prohibited unless strictly authorized.

CUT PROTECTION SLEEVES



Radians Sleeves with DuPont™ Kevlar®

Cut and heat-resistant technology protects arms and wrists from cuts, slashes, punctures, and offers light heat resistance too.

Kevlar® is a synthetic, lightweight, heat-resistant fiber that is incredibly strong, delivering a high tensile strength-to-weight ratio. Kevlar® is also inherently flame resistant—its fibers won't melt, drip, or support combustion.

In addition to the excellent cut and heat-protection benefits of Radians Sleeves, they're lightweight and comfortable too, making them an ideal choice for long wear when both cut and thermal hazards are present at the jobsite. Available in 1-ply and 2-ply.

- **A2 OR A3 CUT PROTECTION**
- **14" OR 18" LENGTH**
- **WITH OR WITHOUT THUMBHOLE**

Meets ANSI/ISEA 105:2016		SLEEVES – COMPLETE LIST				
		Part	Ply	ANSI Cut Protection	Length	Thumbhole
A2	A2 CUT PROTECTION	RAD5114K	1-Ply	A2 Cut Protection	14"	No
		RAD5114KTS	1-Ply	A2 Cut Protection	14"	Yes
		RAD5118K	1-Ply	A2 Cut Protection	18"	No
		RAD5118KTS	1-Ply	A2 Cut Protection	18"	Yes
A3	A3 CUT PROTECTION	RAD5214K	2-Ply	A3 Cut Protection	14"	No
		RAD5214KTS	2-Ply	A3 Cut Protection	14"	Yes
		RAD5218K	2-Ply	A3 Cut Protection	18"	No
		RAD5218KTS	2-Ply	A3 Cut Protection	18"	Yes



RAD5114KTS

RAD5114K

DuPont™, the DuPont Oval Logo, and all trademarks and service marks denoted with ™, SM or ® are owned by affiliates of DuPont de Nemours, Inc. unless otherwise noted. 2021 DuPont.

RADT7418TS

- 13 Ga Tektye™ A4 (Fiberglass and Stainless Steel Free)
- 18" Sleeve
- Thumb Hole
- Hook & Loop Closure
- Comes in Pairs
- Vend Pack

TEKTYE™
by **RADIANS®**



OTHER STYLES



RWG122 S-XXL

- Cotton Corded Palm
- TPR on Back and Fingers
- Thumb Crotch and Pinch Guard



U.S. Pat. No. 9,241,519



6601 S-XXL

- Triple Dipped PVC/Nitrile Coating
- Tough 13 Ga Liner Adds Strength
- Textured Palm, 12" Gauntlet



RWG100 M-XXL

- Padded Double Layer Synthetic Palm
- Reinforced and Reflective Fingertips
- Easy Fit Open Cuff Design
- Silver Reflective Tape
- Reflective Pull Strap



JOB SITE TOUGH

DEWALT has always had the toughest tools to help you get the job done. DEWALT Work Gloves help get the job done in comfort while providing tough protection for your hands.

Whatever the demand, DEWALT Performance Work Gloves are designed to meet it.



WORK GLOVES



Padded palms protect from rapid vibration stress



Extended durability and wear life



Protects from cold while maintaining grip



Fit designed for good tool control



Offers a specified level of cut protection



Overlays on the palm improve grip and durability



TPR absorbs impact to help protect hands



High level of dexterity for precise control & handling



Helps keep hands dry and cool



Helps keep hands cool and comfortable



Protects hands from exposure to moisture



Padding absorbs vibrations reducing hand stress

HPPE CUT TOUCHSCREEN

DPG860

Sizes: S - XXL

- 13 Ga Nylon HPPE Shell
- Polyurethane Palm
- Touchscreen Capable
- Oil & Water Resistant
- Seamless Knit

EN388:2016	4 - Abrasion	Meets ANSI/ISEA 105:2016
4 X 4 2 E	X - Coup Test/Cut	A5 6 5
	4 - Tear	CUT/2220g ABRASION PUNCTURE
	2 - Puncture	
	E - TDM-100 Test	



HI-VIS HPPE CUT TOUCHSCREEN

DPG833

Sizes: S - XXL

- 18 Ga Hi-Vis HPPE Shell
- Micro Foam Nitrile Palm
- Touchscreen Capable
- Oil & Water Resistant
- Reinforced Thumb Saddle

EN388:2016	4 - Abrasion	Meets ANSI/ISEA 105:2016
4 X 4 1 B	X - Coup Test/Cut	A2 3 2
	4 - Tear	CUT/785g ABRASION PUNCTURE
	1 - Puncture	
	B - TDM-100 Test	



COATED

TEXTURED RUBBER GRIP

DPG70

Sizes: M - XL

- Breathable 10 Ga Knit Shell
- Textured Rubber Palm
- Seamless Fit

EN388:2016	2 - Abrasion
2 1 4 2 X	1 - Coup Test/Cut
	4 - Tear
	2 - Puncture
	X - ISO Cut Test



Available 3-Pack

DPG70L-3PK L

CAUTION: Product Contains Latex

HI-VIS HPPE FIBERGLASS CUT

DPG855

Sizes: S - XXL

- 13 Ga Hi-Vis HPPE Shell
- Foam Nitrile Palm
- Oil & Water Resistant
- Reinforced Thumb Saddle

EN388:2016	4 - Abrasion	Meets ANSI/ISEA 105:2016
4 X 4 2 D	X - Coup Test/Cut	A4 4 5
	4 - Tear	CUT/1550g ABRASION PUNCTURE
	2 - Puncture	
	D - TDM-100 Test	



FLEXIBLE DURABLE GRIP

DPG72

Sizes: S - XXL

- Double Dipped Flexible Coating
- Breathable, Flexible 13 Ga Nylon
- Seamless Fit

EN388:2016	4 - Abrasion
4 1 3 1 X	1 - Coup Test/Cut
	3 - Tear
	1 - Puncture
	X - ISO Cut Test



Available Retail Tagged

DPG72T S-XL

BREATHABLE + WATER RESISTANT

DPG35

Sizes: S - XL

- 15 Ga Nylon Liner
- Fully Coated Nitrile
- Seamless Fit

EN388:2016	4 - Abrasion
4 1 2 1 X	1 - TDM-100 Cut
	2 - Tear
	1 - Puncture
	X - ISO Cut Test



ULTRADEX® SMOOTH NITRILE GRIP

DPG73

Sizes: L

- Breathable 13 Ga Poly Shell
- Nitrile Palm Coating
- Elastic Cuff

EN388:2016	3 - Abrasion
3 1 2 1 X	1 - Coup Test/Cut
	2 - Tear
	1 - Puncture
	X - ISO Cut Test



Available 3-Pack

DPG73L-3PK L

ULTRADEX® TREAD GRIP

DPG76

Sizes: L - XL

- 15 Ga Breathable Knit Back
- Textured Nitrile Palm
- Ergonomic Design
- Seamless Fit



ALL PURPOSE PERFORMANCE

DPG200

Sizes: M - XXL

- Water & Oil Resistant Foam Padded Palm
- Reinforced Fingers & Thumb
- Neoprene Knuckle Guard
- Durable Double Stitching
- UlnaLock™ Secure Fit Wrist



ALL PURPOSE UTILITY

DPG201

Sizes: M - XL

- Synthetic Leather Padded Palm and Finger Tips
- Spandex/Polyester Back
- PVC reinforced thumb crotch
- SecureFit™ Wrist Closure
- Spandex Fourchettes



HEAVY-DUTY PADDED PALM

DPG210

Sizes: M - XL

- Memory Gel Padded Palm
- Water/Oil Resistant PVC Overlays
- Reinforced Fingers & Thumb
- UlnaLock™ Secure Fit Wrist



ALL PURPOSE UTILITY

DPG211

Sizes: M - XXL

- Foam Padded Synthetic Leather Palm
- Spandex/Mesh Back
- Foam Padded Knuckle
- Neoprene Wrist with TPR Pull Strap
- Flexible Polyester Fourchettes
- 4 point finger tips



TECH FINGERLESS

DPG230

Sizes: M - XL

- High-Dexterity Fingerless Design
- Double Palm Overlay
- Neoprene Knuckle Guard
- Terry Cloth Brow Wipe
- ToughThread™ Double Stitching



VIBRATION REDUCING PALM

DPG250

Sizes: M - XXL

- Premium Goatskin Leather Palm with Vibration Reducing Memory Gel Padding
- Padded Knuckle Guard
- Reinforced Fingers & Thumb
- Terry Cloth Brow Wipe



PERFORMANCE MECHANIC GRIP

DPG780

Sizes: M - XL

- Tacky Silicone Fingertip Grips
- PVC Palm Grip Overlays
- TPR Knuckle Guards*
- Reinforced Fingers & Thumb
- Terry Cloth Brow Wipe



*US Patent #9,241,519

IMPACT PERFORMANCE

DPG781

Sizes: M - XL

- Padded PVC Palm
- TPR Impact Guards*
- PVC Fingertip Grips
- SecureFit™ Wrist Closure
- Thumb Saddle Reinforcements



*US Patent #9,241,519



SECUREFIT™ GENERAL UTILITY

DPG217

Sizes: M - XL

- Foam Padded Knuckle and Palm
- Rubberized Overlays
- SecureFit™ Wrist Closure



RAPIDFIT™ GENERAL PURPOSE

DPG218

Sizes: M - XL

- Reinforced Finger & Thumb
- Foam Padded Knuckle & Palm
- Lightweight & Breathable
- Short Slip-On Cuff



HIGH DEXTERITY MECHANIC

DPG222

Sizes: L - XL

- Hi-Dex Nubuck Foam Padded Palm
- Reinforced Fingers and Thumb
- RapidFit™ Slip-On Cuff



HI-VIS REFLECTIVE UTILITY

DPG870

Sizes: M - XL

- Rubberized Grip Overlays
- High Visibility Green Back
- Silver Reflective Tape
- RapidFit™ Slip-On Cuff



ALL PURPOSE UTILITY

DPG20

Sizes: M - XL

- Reinforced Finger Tips
- Padded Palm
- Neoprene Knuckle Guard
- Terry Cloth Brow Wipe
- Elastic Wrist Strap





PERFORMANCE DRIVER HYBRID

DPG212

Sizes: M - XL

- Rugged Reverse Leather Overlays
- Premium Grade Cowhide Leather
- Reinforced Thumb Saddle
- Neoprene Knuckle Guard
- Terry Cloth Brow Wipe



LEATHER PERFORMANCE HYBRID

DPG216

Sizes: L - XL

- Split Cowhide Leather Palm with Durable Palm Overlay
- Breathable Spandex Back
- Reinforced Thumb Saddle



PREMIUM GRADE LEATHER DRIVER

DPG32

Sizes: M - XL

- Split Leather Palm Overlay
- Elasticized Wrist
- Keystone Thumb



PREMIUM SPLIT LEATHER PALM

DPG41

Sizes: L

- Split Leather Knuckle Strap
- 2 1/2" Rubberized Cuff
- Double Leather Palm



2-IN-1 CWS™ THERMAL GRIPPER

DPG737

Sizes: M - XXL

- Moisture Wicking Nylon Outer Shell
- Acrylic Thermal Liner
- Microfoam ¾ Dip and Palm



MILD CONDITION FLEECE

DPG740

Sizes: M - XL

- Wind/Water Resistant Shell
- Palm & Finger Overlays
- Reinforced Thumb Saddle



WIND & WATER RESISTANT

DPG748

Sizes: L - XL

- 40g Polyester Thermal Lined
- Water Resistant
- Palm & Finger Overlays
- Rubber Pull Tab



HARSH CONDITION INSULATED

DPG755

Sizes: L - XL

- 40g Thinsulate™ / Polyurethane Liner
- Dual Layer Thumb Saddle
- Durable Waterproof Outer Shell
- Neoprene Knuckle Guard & Wrist
- Rubberized Grip Overlays

Thinsulate
INSULATION



EXTREME CONDITION INSULATED

DPG750

Sizes: M - XXL

- Wind & Waterproof Quad Layer
- 100g Micro Fleece Liner
- Extended Gauntlet Cuff
- Water and Oil Resistant PVC Palm Overlay
- PU Coated Polyester Shell
- Neoprene Knuckle Guard





RADIANS®

HEADQUARTERS

5305 Distriplex Farms Drive
Memphis, Tennessee 38141

Toll Free: 877-723-4267

Phone: 901-388-7776

Fax: 901-266-2558

Email: sales@radians.com

WWW.RADIANS.COM